

BELIEVE
IN HIM | FOR THEM | JERSEYCHURCH.ORG

JERSEY  CHURCH



I PRAY THAT THE EYES OF YOUR HEART MAY BE ENLIGHTENED SO THAT YOU
MAY KNOW WHAT IS THE HOPE OF HIS CALLING, WHAT IS THE WEALTH OF HIS
GLORIOUS INHERITANCE IN THE SAINTS, AND WHAT IS THE IMMEASURABLE
GREATNESS OF HIS POWER TOWARD US WHO BELIEVE, ACCORDING TO THE
MIGHTY WORKING OF HIS STRENGTH.

EPHESIANS 1:18-19

Dear Jersey,

Our church has been blessed by God. We have strived to follow the will of God for His church and display His truth in our lives. Jesus made clear His Father's will in John 6:40 - "For this is the will of my Father: that everyone who sees the Son and believes in Him will have eternal life." Thousands have believed and found new life in Christ at Jersey. New churches have been started. Untold numbers of people have been cared for, and marriages have been strengthened. We are making caring disciples who in turn make disciples. Many come to Jersey and find not just eternal life but also purpose for life.

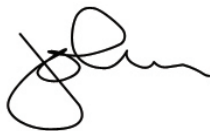
“As we look to the future, we want to continue reaching those who have not yet believed.”

While we have received blessings, our heart cry to God should be, "Lord make me a blessing." As we contemplate how God might achieve this end in our lives, we are wise to be good stewards of all His gracious hand has provided in the past. This includes both spiritual and physical blessings.

Over the past couple of years, our leadership at Jersey has examined our ministries and assessed our needs for facility changes. We considered expanding the footprint of our campus by constructing a new children's building; however, costs were seen as excessive. The message of our ministries has not changed, but how we do ministry has. Our buildings are beginning to show their age. The oldest building is turning 35 and is in need of serious renovations.

Our vision is to renovate much of our campus over the next couple of years in phases and to accomplish this with minimal or no debt. I want to invite you to join Jan and I and our Church Council and consider how you can generously help, according to the will of God. Haddon Robinson wrote, "You will invest your life in something, or you will throw it away on nothing."

BELIEVE with me and watch God do great things!



Pastor John



IN HIM | FOR THEM

Jersey Church is both a redeemed people and a special place. In this place, people **BELIEVE**. For over 37 years, we have cared for people and connected them to Christ. We have a reputation for biblical preaching, Bible studies, serving others, and discipling relationships.

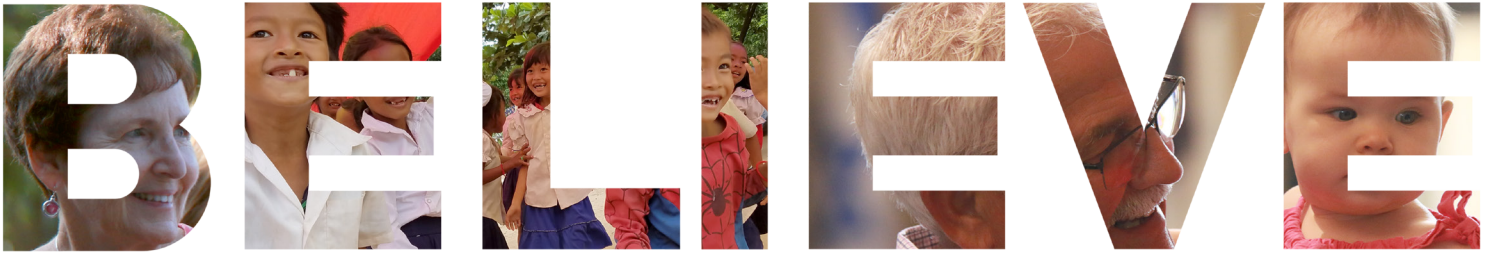
We have always tried to be future-focused as we think about and pray for those who have not yet believed. So, as we consider this renovation project, we **BELIEVE IN HIM** and what He can do as we stay on mission **FOR THEM**.

Over the next six weeks, we will **BELIEVE** together that God is moving us to care for and connect even more people to Jesus than ever before. Let's join hands and hearts together **IN HIM** and **FOR THEM**.

Since we completed our first building, people have walked through the doors of our church nearly two million times. With that in mind, it is easy to see why some of our facilities look a bit tired, even with our team working hard to keep them fresh.

Many of our ministries are structured differently than they were when we designed and built our buildings. For example, some senior adults now meet where students met previously. Our Kids Ministry in the past required many small rooms, and now they need larger rooms. In some cases, how ministry is conducted is being determined by room size rather than by best practices.

We have received inspiration, vision, and direction for our church. After much prayer, consideration, and exploration, we **BELIEVE** now is the time to refurbish two of our oldest buildings in Phase 1 and begin preparation for additional phases. Those would include enhancements to adult, student, elementary, and preschool rooms for the next generation. Let's join hands and hearts together **IN HIM** and **FOR THEM**.



BELIEVE requires involvement from everyone.

The heart behind this renovation of our campus is to renovate lives. Our campus is a tool that God uses to reclaim people cast aside by this world. We are devoted to doing all things in our ministry **IN HIM** and **FOR THEM**. Our church exists for the glory of God and to make disciples of those who don't know Him.

Thirty-seven years ago, our location was seen as a substantial challenge for growing a church. Most new congregations were being formed around the 270-outerbelt, not in the country. Everything has changed. The population of our surrounding area has grown significantly, and major corporations are locating in our backyard. No church is better positioned to experience a positive future than we are. We have the message, the unchanging gospel, a gifted staff, a faithful congregation, and facilities that, with some work, can serve our changing needs long into the future.

GOD'S BLESSINGS

Below you will find just some of God's blessings at Jersey over the past 37 years

1980

Jersey Baptist Chapel formed
(14 charter members)

1986

Chapel constructed



1992

First organized
international
mission trip
(Uganda)

1983

Jersey Baptist Church
constituted

First building (83 Building)
constructed

1983



Pastor
John Hays
called as
pastor

1981



Fellowship Hall
(Game Room)
constructed

1992

Growth pushed
us to three
worship
services

BAPTISMS

We have baptized 3,586 individuals since 1980.

MISSIONS GIVING

Since 1980, we have given a total of \$11,277,122 to missions locally and around the world.

1998

First Education Building constructed



Continued growth pushed us to maximize current worship facilities

2010

Off-campus Grow Groups begin



2014

First Feed the City (approx. 3500 families fed since)



Construction of Worship Activities Center (Central Venue)

1994-96

Second Education Building and Youth Activities Center (North Venue) constructed

2001-02

Multiple venues begin: Gospel Celebration (2004), Emerge (2005) and Synaxis (2007)

2004-07

Launch of Jersey Weekday Preschool

2016



2018



NEISHA GRUBAUGH

“ Pastor John is led by the Holy Spirit and boldly presents the gospel in its God-inspired, inerrant form. The relationships we have formed here in the last 20 years are priceless. Jersey has become our family! ”

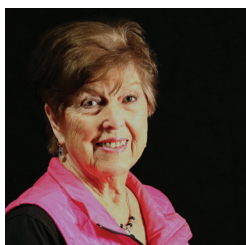
AL NAPIER

“ Remember how you would feel when you came home and mom and dad would give you a hug and a kiss? I get the same feeling when I come to church at Jersey. I’m home. ”



NOLA BROWN

“ Jersey is a ‘filling station’ that provides us with great spiritual truths which continuously refill our tanks so that we may honor Him in our everyday lives. We appreciate the sweet spirit of fellowship with many wonderful friends here. ”



ALEC HENRIOT

“ I love Jersey because it really challenges my spiritual development and the community is incredible. ”



JESSICA STELMACH

“ Jersey is a second home to me where I have met so many wonderful people who have loved and encouraged me throughout my life. It’s a safe place for my family to go and grow in our faith while also discipling with friends that I call our second family. ”



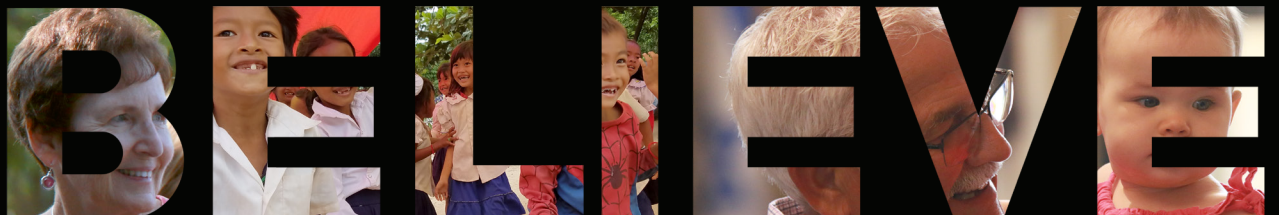
RAY MCFERREN

“ As the father of a young family, I appreciate that Jersey places such an emphasis on youth. This is the kind of place where I want to raise my family. ”



OUR MISSION:
CARING FOR
PEOPLE AND
CONNECTING
THEM TO
CHRIST

BELIEVE



BUILDING RENOVATIONS

Phase 1

Renovated Adult/Senior Adult Space and Preschool Ministry Space



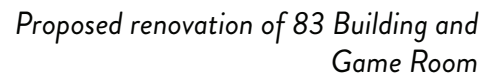
New adult/senior adult classroom

Phase 1 will begin in June 2018. Volunteers from the church will assist in the interior demolition of our oldest building - the 83 Building and Game Room. Following demo, a construction crew will come in to remodel that area into our new adult/senior adult space. Features will include:

- A new handicap accessible entrance from the Chapel Parking Lot
- A wider, more gradual handicap ramp to/from the Chapel Lobby
- Five adult classrooms that will be closer to the worship venues for those less mobile
- One classroom that will accommodate up to 80 people for senior adult Bible studies, Focused Grow Groups, luncheons, and other special events
- Counter space and sinks in all renovated classrooms
- Internet-enabled smart TVs in all classrooms
- The addition of two new bathrooms
- An expanded kitchen

Adults and senior adults are expected to occupy the remodeled building in the fall of 2018.

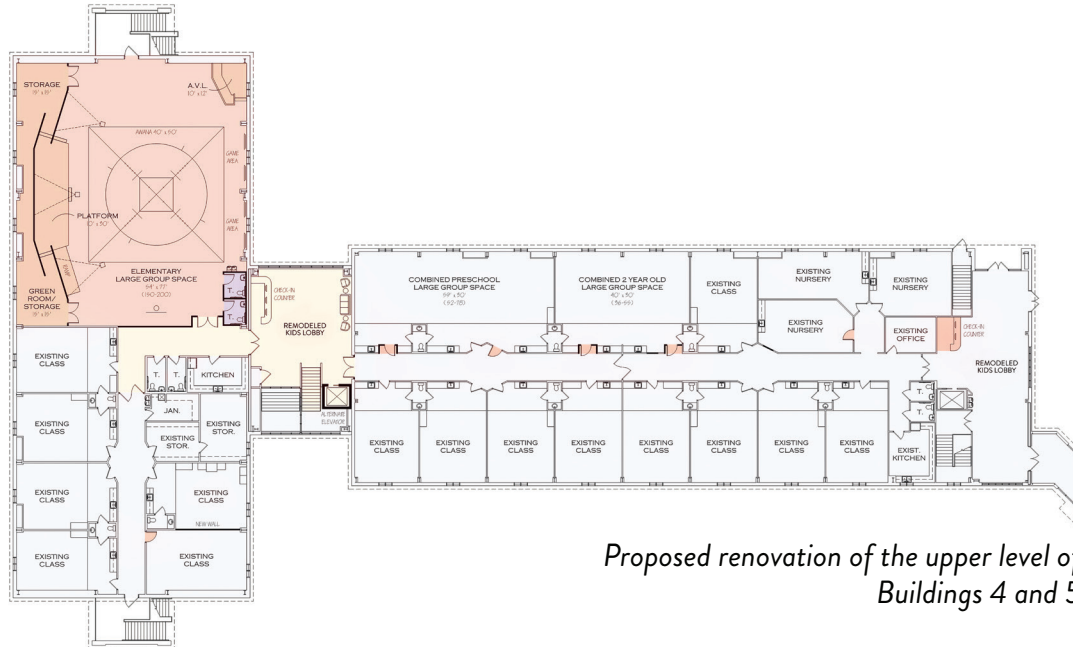
- Closer proximity of parents to their children during worship
- Increased security by having Building 4 secured on both ends
- Refurbished preschool classrooms
- A dedicated and enhanced preschool worship space
- Potential option for the addition of a new stroller/handicap ramp on the north side of the building (depending on availability of funds raised)



BUILDING RENOVATIONS

Phase 2

Elementary Ministry Space



*Proposed renovation of the upper level of
Buildings 4 and 5*

Phase 2 is expected to begin in the fall of 2018 or winter of 2019, after the preschoolers move into Building 4. The upper level of Building 5 will be renovated for our elementary kids. The north end of Building 5 will be gutted to make way for an expanded elementary worship space. The south end of Building 5 will be refreshed for elementary classrooms. Features of this remodeling project include:

- Space for up to 200 elementary kids in worship so we can continue to reach and retain young families
- Two new additional restrooms
- Enhanced stage lighting, audio, video, and environmental projection
- A remodeled kids lobby
- Remodeled classroom spaces
- Potential option for a new elevator (depending on the availability of funds raised)

Elementary kids are expected to occupy the upper level of Building 5 in the winter/spring of 2019.

BUILDING RENOVATIONS

Phase 3

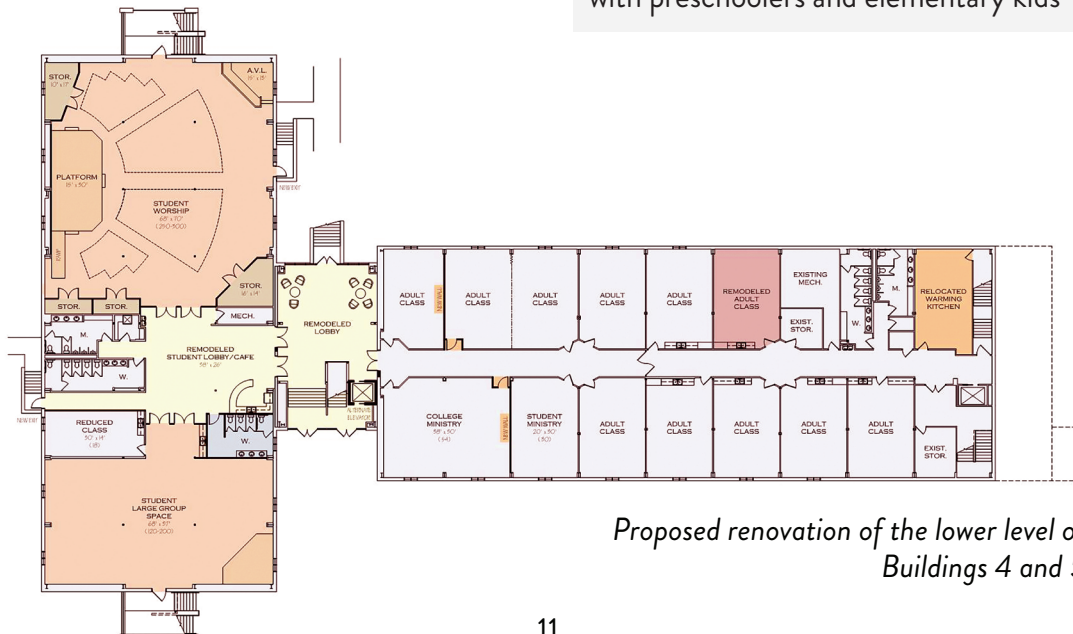
Student Ministry Space and College Ministry Space

Phase 3 is expected to begin later in 2019 after the elementary kids move upstairs in Building 5. Phase 3 will include the complete renovation of the lower level of Building 5 into a space dedicated to student ministry. Some of the great features of this renovation include:

- A worship space for High School Ministry and Middle School Ministry to be used at different hours for up to 300 students per hour
- A large group space for student Grow Groups, Relational Discipleship, and for students to hang out
- A coffee bar for students
- Additional women's restrooms
- The ability to secure the student ministry space

Phase 3 also includes some minor renovations to the lower level of Building 4 for adults. The renovation of this space allows for:

- Dedicated College Ministry space
- Space for young married couples
- Remodeled lobby space for all ages
- Space for single adults
- Adult classroom spaces for all ages
- Closer proximity to worship venues for families with preschoolers and elementary kids



Proposed renovation of the lower level of Buildings 4 and 5

BENEFIT BREAKDOWN

ADULTS AND SENIOR ADULTS

The newly renovated portion of this project will provide our Adult Ministries with:

- Additional handicap accessibility to the newly renovated adult classrooms
- Updated technology in all adult classrooms (Internet-enabled smart TVs)
- An additional expanded classroom to accommodate larger groups
- Additional restrooms with closer proximity to newly renovated adult classrooms
- Closer proximity of newly renovated adult/senior adult space to our worship venues

KIDS AND YOUNG FAMILIES

The newly renovated portion of the upper levels of Buildings 4 and 5 of this project will provide our kids (birth - 5th grade) with:

- A safer and even more secure Kids Ministry area
- Closer proximity of newly renovated preschool area to our worship venues
- Easier accessibility to the new kids lobby area of the building
- An expanded and remodeled elementary worship space
- A dedicated and enhanced preschool worship space



New elementary worship space

STUDENTS

The newly renovated portion of the lower level of Building 5 of this project will provide our students (6th - 12th grade) with:

- A dedicated worship space to be used at different hours for Middle School Ministry and High School Ministry
- A consolidated Middle School Ministry and High School Ministry space to facilitate stronger ministry oversight and tighter security
- Technology to help create dynamic ministry environments

COLLEGE

The newly renovated portion of the lower level of Building 4 of this project will provide our College Ministry with:

- Dedicated ministry space inside the building
- Closer proximity to our other Next Gen Ministries*

**Our Next Gen Ministries will be in the same areas of the building allowing for a greater sense of unity while promoting an integrated philosophy of ministry from birth to college.*



New student worship space

COST AND TIMELINE

Remodeling Cost Summary*

PHASE 1

Renovated Adult/Senior Adult Space and Preschool Ministry Space

Cost: \$661,320
Square Footage: 12,190
(\$54.25 /Sq. Ft.)

PHASE 2

Elementary Ministry Space

Estimated Cost: \$705,492
Square Footage: 12,700
(\$55.55 /Sq. Ft.)

PHASE 3

Student Ministry Space and College Ministry Space

Estimated Cost: \$974,095
Square Footage: 17,260
(\$56.43 /Sq. Ft.)

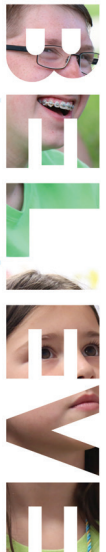
Soft Costs: \$50,000 Architectural Fees, Permits, and Financing Costs (as necessary)

TOTAL ESTIMATED PROJECTED COST \$2,500,000

We **BELIEVE** that God is leading us to accomplish this project and trust that He will provide all that is needed through the faithful gifts of His people.

Jersey is debt-free. We are praying that our **BELIEVE** commitments will cover all expenses associated with this renovation project. To minimize the need to obtain a loan, the timing of Phases 2 and 3 will be impacted based on the availability of **BELIEVE** funds.

*The costs associated with Phase 1 are solid. However, the costs associated with Phases 2 and 3 are estimates based on the current cost of labor and materials. Due to the uncertainty of the timing of the phases, the actual costs could go up or down.



GOALS

PRAY - \$1.25 MILLION

HOPE - \$2 MILLION

BELIEVE - \$2.5 MILLION

LENGTH OF COMMITMENT: TWO YEARS

God has placed you here and preserved you “for such a time as this.”

For the past 37 years, God has used Jersey to touch the lives of thousands; He has blessed the sacrifices made by many of you and by many who have gone before us.

Today, we have an amazing opportunity in front of us. Will we rise to the level of those who have gone before us as we continue **caring for people and connecting them to Christ?**



YOUR NEXT STEP

Ask God what He desires and intends for you to give over the next two years. Make your commitment by faith and obedience.

There are no commitments too large or too small.

Each gift is given **IN HIM** and **FOR THEM**.

Do you BELIEVE?

Here is a sample of the BELIEVE commitment card you will receive.

 IN HIM FOR THEM JERSEYCHURCH.ORG	
CONTACT	I BELIEVE
Name _____	I prayerfully commit to give:
Address _____	\$ _____ weekly for 104 weeks, or
_____	\$ _____ monthly for 24 months, or
_____	\$ _____ annually for 2 years, or
Phone _____	\$ _____ in a one-time gift
Email _____	<i>I understand this commitment is over and above my current giving.</i>
	My Total Commitment
	\$ _____
<p>This statement of intention may be revised or cancelled. jerseychurch.org/believe</p>	

ONE GENERATION WILL DECLARE YOUR WORKS TO
THE NEXT AND WILL PROCLAIM YOUR MIGHTY ACTS.

PSALM 145:4

JERSEY CHURCH

13260 Morse Road
New Albany, Ohio 43054
jerseychurch.org | 740-927-1859



@jerseychurch